

**GENERAL NOTE:**

ALL POSITIONS OF FIXTURES, TAPWARE AND APPLIANCES SHALL BE CO-ORDINATED WITH ALL DISCIPLINES AND TRADES WITH REFERENCE MADE TO ALL CONTRACT DOCUMENTS RELATIVE TO SETTING OUT OF TILING, CABINETRY, ETC. THE CONTRACTORS SHALL BE RESPONSIBLE FOR CARRYING OUT THE CO-ORDINATION OF THE HYDRAULIC SERVICES SCOPE OF WORKS.

THE CONTRACTOR SHALL PRIOR TO COMMENCING ANY WORKS SHALL EXCAVATE AND LOCATE AND CONFIRM THE LOCATION OF EXISTING SERVICES AT THE NOMINATED CONNECTION POINTS AS SHOWN ON DRAWINGS.

ALL EXISTING SERVICES SHOWN ARE INDICATIVE ONLY BASED UPON PREVIOUS DESIGNS AND AS CONSTRUCTED DRAWINGS.

ALLOW TO TEMPORARILY DIVERT ANY SERVICES AS SHOWN OR NOMINATED ON THIS DRAWING TO MAINTAIN SERVICES TO THE OTHER BUILDINGS.

**LEGEND TO HYDRAULIC SERVICES (APPLICABLE TO ALL SHEETS)**

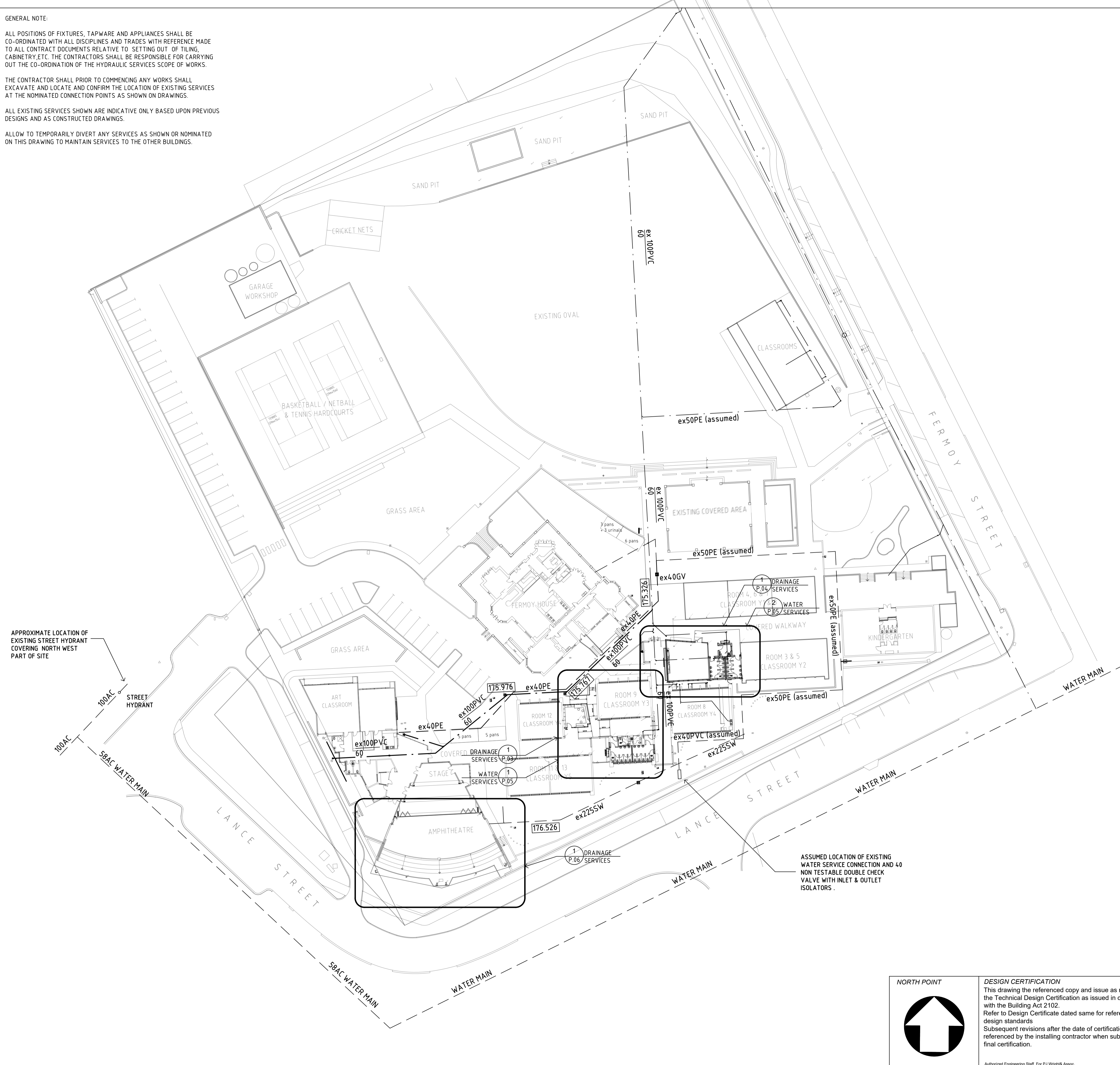
SOIL DRAINS	---
STORMWATER DRAINS	---
VENT PIPES	---
COLD WATER	---
HOT WATER	---
PRESSURE MAIN	---
GAS SERVICE	---
FIRE HYDRANT SERVICE	---
FLOOR WASTE LINE	---

**ABBREVIATIONS APPLICABLE TO SERVICE DRAWINGS**

AAV	AIR ADMITTANCE VALVE
AFFL	ABOVE FINISHED FLOOR LEVEL
A/C	AIR CONDITIONING
AP	ACCESS PANEL
BS	BRASS
BV	BALL VALVE
C	COPPER
CI	CAST IRON
CP	CHROME PLATED
CV	CHECK VALVE
CW	COLD WATER
DCV	DOUBLE CHECK VALVE (TESTABLE U.O.N.)
DP	DOWNPIPE
DPO	DOWNPIPE ON LEVEL OVER
DHB	DISABLED HAND BASIN
DWC	DISABLED WATER CLOSET
FA	FROM LEVEL ABOVE (DROPPER)
FB	FROM LEVEL BELOW (RISER)
FFL	FINISHED FLOOR LEVEL
FG	FLOOR WASTE GULLY
FW	FLOOR WASTE
FWST	FLOOR WASTE STACK
GSP	GALVANISED STEEL PIPE
GV	GATE VALVE
GAVL'D	GALVANISED
HB	HAND BASIN
HW	HOT WATER
HWU	HOT WATER UNIT
I.O.	INSPECTION OPENING OR INSPECTION GATE
IWSP	INDUSTRIAL WASTE SAMPLING POINT
IWT	INDUSTRIAL WASTE TRAP
LIT	LEVEL INVERT TAPER
NRV	NON RETURN VALVE
PP	POLYETHYLENE (HD- HIGH DENSITY MD MEDIUM DENSITY)
PP	POLYPROPYLENE
PVC	POLY VINYL CHLORIDE (UNPLASTICISED U.O.N.)
RE	ROD END
RS	RISING SHAFT
RPZD	REDUCED PRESSURE ZONE DEVICE
SC	STOPCOCK
SK	SINK
SS	STAINLESS STEEL
SST	SOIL STACK
ST#	STACK (# = DESIGNATION/ NUMBER)
SW	STORMWATER
TA	TO LEVEL ABOVE (RISER)
TB	TO LEVEL BELOW (DROPPER)
TD	TUNDISH
TCV	TEMPERING VALVE
TMV	THERMOSTATIC CONTROL VALVE
WC	WATER CLOSET - (TOILET PAN)
VPR	VENT PIPE RISER

X	DETAIL NUMBER
P.xx	DWG NUMBER
xxx	SERVICE TYPE
xx	NOMINAL BORE
FU	NOMINAL FIXTURE UNITS
X	

**NOTE:**  
PRIOR TO WORK COMMENCING ON SITE THE CONTRACTOR SHALL UNDERTAKE A SITE SURVEY TO TRACE EXISTING DOMESTIC WATER SERVICE TO CONFIRM ROUTES AND SIZES. PROVIDE ALL INFORMATION TO PROJECT ARCHITECT AND CONSULTANT FOR ASSESSMENT



APPROXIMATE LOCATION OF EXISTING STREET HYDRANT COVERING NORTH WEST PART OF SITE

ASSUMED LOCATION OF EXISTING WATER SERVICE CONNECTION AND 40 NON TESTABLE DOUBLE CHECK VALVE WITH INLET & OUTLET ISOLATORS.

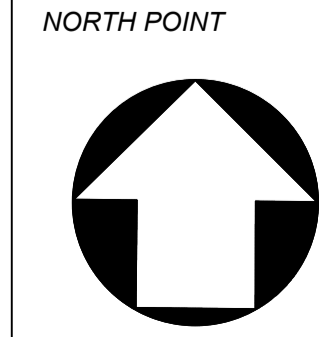
A	21/10/21	ISSUED FOR DEVELOPMENT APPROVAL
PRE	10/9/21	PRELIMINARY ISSUE
Revision	Date	Description

**P.J. WRIGHT & ASSOCIATES PTY LTD**  
Hydraulic & Fire Design Consultants  
Suite 2 / 101 Scarborough Beach Road Mount Hawthorn Western Australia 6016  
PO Box 335 Mount Hawthorn Western Australia 6915  
telephone (08) 9443 3466 facsimile (08) 9242 2304 email contact@pjwrightandassociates.com.au



Project		ST JOSEPHS PRIMARY SCHOOL 1 LANCE STREET NORTHAM FOR CATHOLIC EDUCATION OFFICE	
Drawing Title	Scale	Date	Revision
HYDRAULIC SERVICES	1:400 @ A1	AUG 21	A
SITE PLAN	Drawn	TRs/JGT	P.01

**DESIGN CERTIFICATION**  
This drawing the referenced copy and issue as noted in the Technical Design Certification as issued in compliance with the Building Act 2102. Refer to Design Certificate dated same for reference design standards. Subsequent revisions after the date of certification must be referenced by the installing contractor when submitting final certification.  
Authorized Engineering Staff For P.J. Wright & Assoc. Date



NOTE:  
PRIOR TO ANY WORKS COMMENCING ALLOW TO UNDERTAKE A FULL HYDRAULIC SERVICES SURVEY TO LOCATE AND CONFIRM ALL SERVICES WITHIN THE DESIGNATED SITE AREA.  
ALLOW TO RECORD ALL SERVICES FOUND DURING INVESTIGATIONS THAT DO NOT REQUIRE REMOVAL OR SEALING.

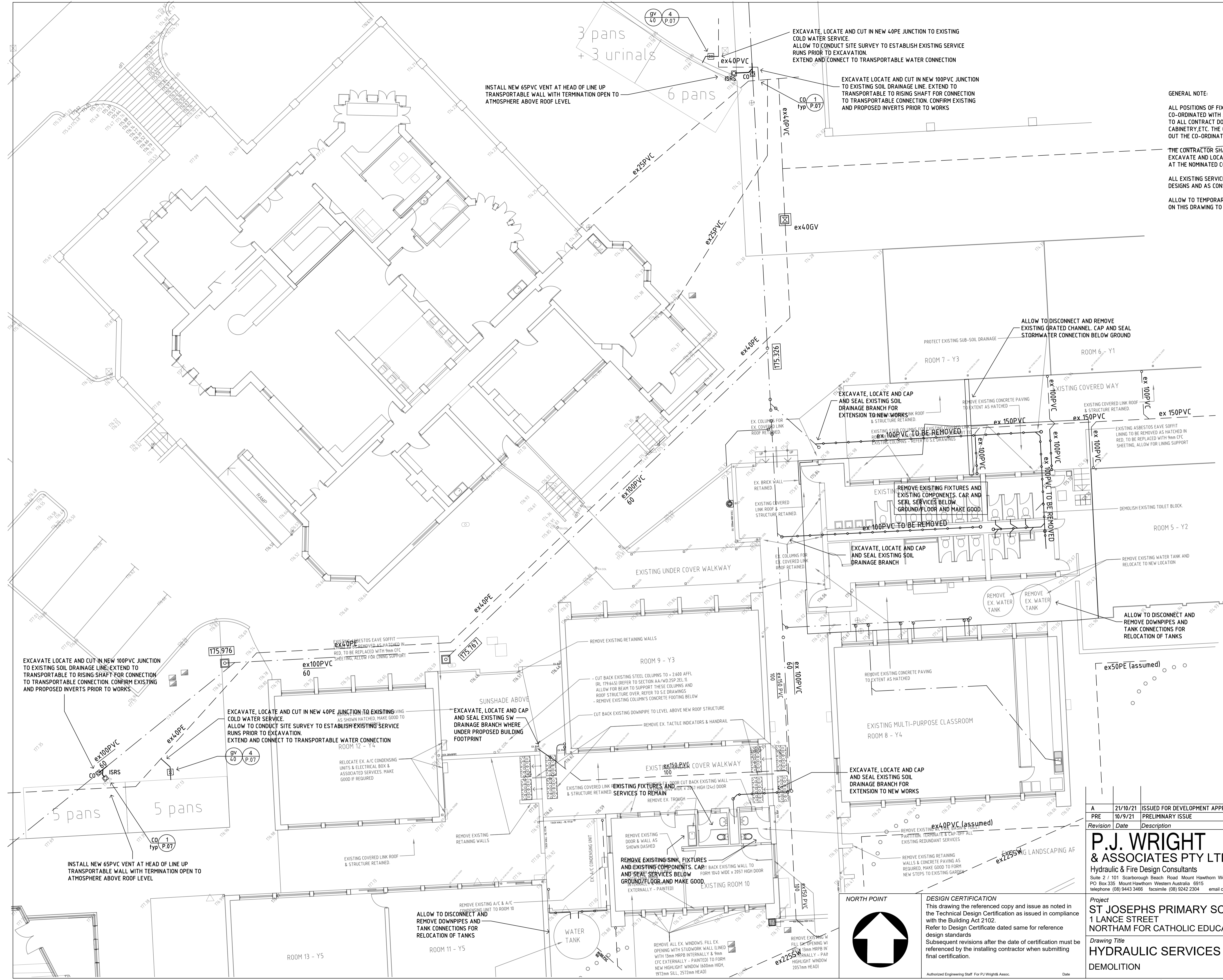
GENERAL NOTE:

ALL POSITIONS OF FIXTURES, TAPWARE AND APPLIANCES SHALL BE CO-ORDINATED WITH ALL DISCIPLINES AND TRADES WITH REFERENCE MADE TO ALL CONTRACT DOCUMENTS RELATIVE TO SETTING OUT OF TILING, CABINETRY ETC. THE CONTRACTORS SHALL BE RESPONSIBLE FOR CARRYING OUT THE CO-ORDINATION OF THE HYDRAULIC SERVICES SCOPE OF WORKS.

THE CONTRACTOR SHALL PRIOR TO COMMENCING ANY WORKS SHALL EXCAVATE AND LOCATE AND CONFIRM THE LOCATION OF EXISTING SERVICES AT THE NOMINATED CONNECTION POINTS AS SHOWN ON DRAWINGS.

ALL EXISTING SERVICES SHOWN ARE INDICATIVE ONLY BASED UPON PREVIOUS DESIGNS AND AS CONSTRUCTED DRAWINGS.

ALLOW TO TEMPORARILY DIVERT ANY SERVICES AS SHOWN OR NOMINATED ON THIS DRAWING TO MAINTAIN SERVICES TO THE OTHER BUILDINGS.



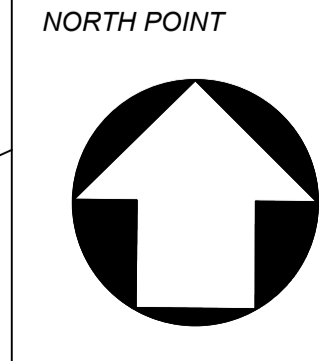
A	21/10/21	ISSUED FOR DEVELOPMENT APPROVAL
PRE	10/9/21	PRELIMINARY ISSUE
Revision	Date	Description

**P.J. WRIGHT & ASSOCIATES PTY LTD**  
Hydraulic & Fire Design Consultants  
Suite 2 / 101 Scarborough Beach Road Mount Hawthorn Western Australia 6016  
PO Box 335 Mount Hawthorn Western Australia 6915  
telephone (08) 9443 3466 facsimile (08) 9242 2304 email contact@pjwrightandassociates.com.au



Project  
**ST JOSEPHS PRIMARY SCHOOL**  
1 LANCE STREET  
NORTHAM FOR CATHOLIC EDUCATION OFFICE

Drawing Title	Date	Aug 21	Drawing Number	Revision
<b>HYDRAULIC SERVICES</b>	Scale	1:100 @ A1	<b>P.02</b>	A
DEMOLITION	Drawn	TRS/JGT		

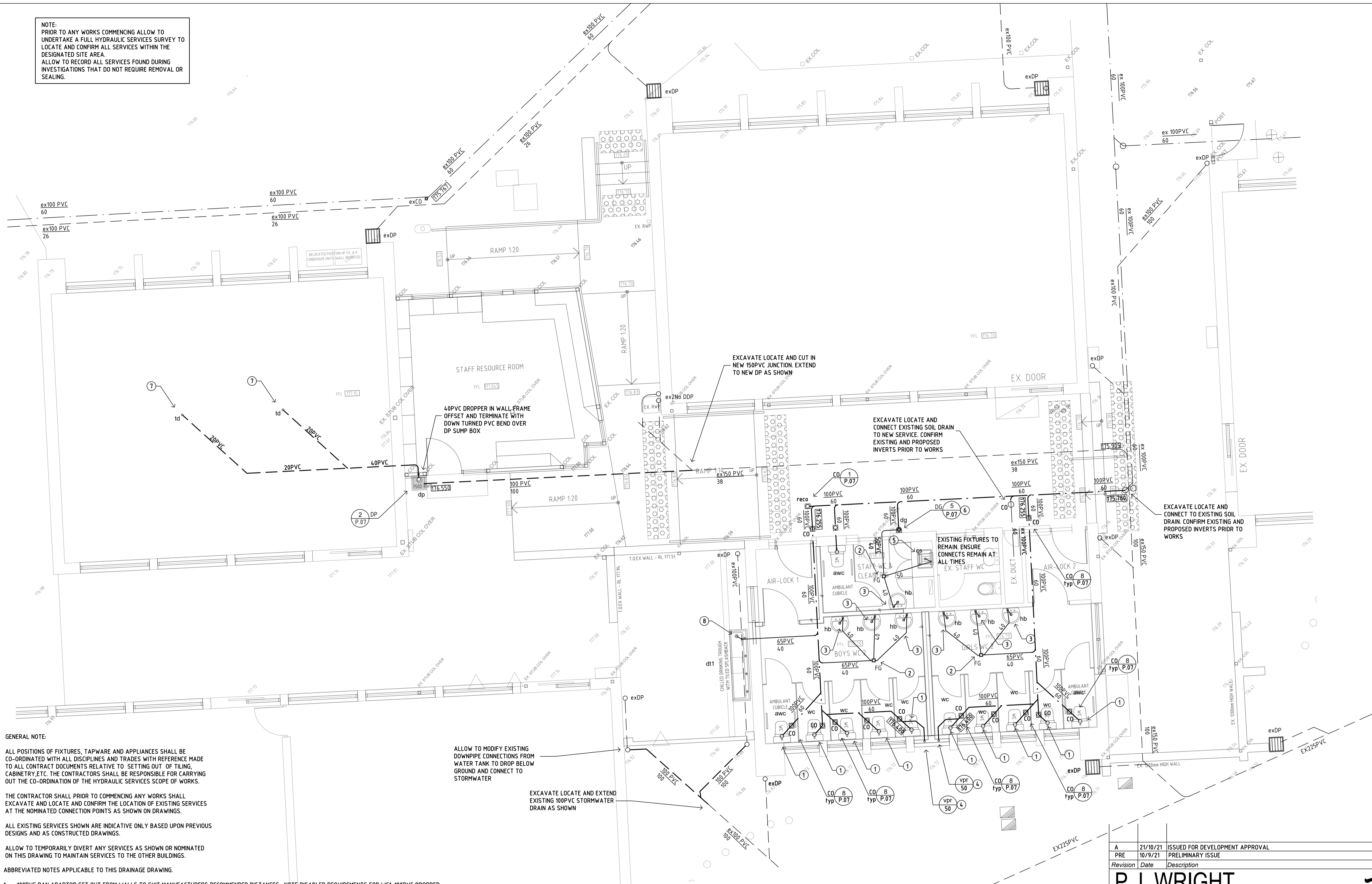


**DESIGN CERTIFICATION**  
This drawing the referenced copy and issue as noted in the Technical Design Certification as issued in compliance with the Building Act 2102.  
Refer to Design Certificate dated same for reference design standards.  
Subsequent revisions after the date of certification must be referenced by the installing contractor when submitting final certification.

This drawing is an Autocad format document and manual adjustment of plots or prints is not permitted.



NOTE:  
PRIOR TO ANY WORKS COMMENCING ALLOW TO  
UNDERTAKE A FULL HYDRAULIC SERVICES SURVEY TO  
LOCATE AND CONFIRM ALL SERVICES WITHIN THE  
DESIGNATED SITE AREA.  
ALLOW TO RECORD ALL SERVICES FOUND DURING  
INVESTIGATIONS THAT DO NOT REQUIRE REMOVAL OR  
SEALING.



**GENERAL NOTE:**

ALL POSITIONS OF FIXTURES, TAPWARE AND APPLIANCES SHALL BE CO-ORDINATED WITH ALL DISCIPLINES AND TRADES WITH REFERENCE MADE TO ALL CONTRACT DOCUMENTS RELATIVE TO SETTING OUT OF TILING, CABINERY, ETC. THE CONTRACTORS SHALL BE RESPONSIBLE FOR CARRYING OUT THE CO-ORDINATION OF THE HYDRAULIC SERVICES SCOPE OF WORKS.

THE CONTRACTOR SHALL PRIOR TO COMMENCING ANY WORKS SHALL EXCAVATE AND LOCATE AND CONFIRM THE LOCATION OF EXISTING SERVICES AT THE NOMINATED CONNECTION POINTS AS SHOWN ON DRAWINGS.

ALL EXISTING SERVICES SHOWN ARE INDICATIVE ONLY BASED UPON PREVIOUS DESIGNS AND AS CONSTRUCTED DRAWINGS.

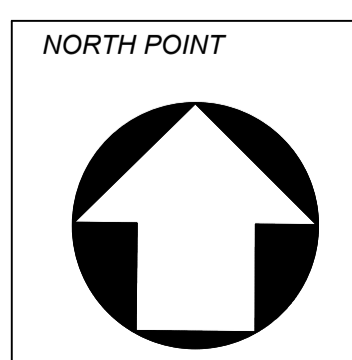
ALLOW TO TEMPORARILY DIVERT ANY SERVICES AS SHOWN OR NOMINATED ON THIS DRAWING TO MAINTAIN SERVICES TO THE OTHER BUILDINGS.

ABBREVIATED NOTES APPLICABLE TO THIS DRAINAGE DRAWING.

- 1 100PVC PAN ADAPTOR SET OUT FROM WALLS TO SUIT MANUFACTURERS RECOMMENDED DISTANCES. NOTE DISABLED REQUIREMENTS FOR WC1. 100PVC DROPPER THROUGH FLOOR SLAB TO PVC BEND AND DRAIN TYPICAL ALL W.C'S
- 2 HARBIC CHROME PLATED 90 X 90 X 80 DIA FLOOR GRATE FINISHED FLUSH WITH TILING AND ALIGNED WITH TILING JOINTS. 80PVC EXTENSION THROUGH SLAB WITH WASTE CONNECTIONS AS SHOWN TO 80 X 50 PVC FLOOR GULLY TRAP. 50PVC WASTE RUN UNDER SLAB TO DG AS SHOWN.
- 3 40CP BS P TRAP WITH UNION AND 40MM CP DROPPER WASTE FIXED CLEAR OF WALL FACE. FIT CP ESCUTCHEON PLATE AT FFL CHANGE TO 40 BELOW SLAB AND RUN 40PVC WASTE UNDER SLAB TO ADJACENT FG OR DG AS SHOWN.
- 4 100PVC BEND WITH RISER FITTED WITH 100 X 50 LIT IN VERTICAL. VENT RISER (SIZED AS SHOWN) TO RISE IN CORNER OF CUPBOARD WITH FULL HEIGHT ALCOR COVER FLASHING. RISE AND OFFSET IN CEILING SPACE (NOT SHOWN) TO PENETRATE ROOF NOMINALLY 600MM FROM EAVES LINE. PENETRATE ROOF WITH SUITABLE DECKTITE FLASHING TO MATCH ROOF SHEET PROFILE. TERMINATE VENT WITH PVC COWL NOMINALLY 150MM ABOVE ROOF LINE. PAINT EXPOSED VENT AND COWL TO MATCH ROOF COLOR.
- 5 50PVC DROP WASTE FROM CLEANERS SINK WITH UNION AT BASE FOR CLEARING. RUN 50PVC UNDER SLAB TO FG AS SHOWN
- 6 GALVINS FLAT BACK PRECAST DG SURROUND FINISHED NOMINALLY 75MM ABOVE PAVING 100PVC EXTENSION TO 100PVC P TRAP WITH WASTE CONNECTIONS AS SHOWN
- 7 40 TUNDISH X 20PVC WASTE IN CEILING SPACE RUN ALONG SIDE RAFTERS TO DROP IN CAVITY ENLARGE TO 50 PVC AND TERMINATE OVER DG WITH DOWNTURNED BEND AS SHOWN. ALLOW TO LIAISE WITH MECHANICAL CONTRACTOR FOR FINAL LOCATION
- 8 50PVC DRAIN FROM REFRIGERATED DRINKING TROUGH. DROP 50PVC, CHANGE TO 65PVC AT GROUND LEVEL AND RUN BELOW SLAB DIRECT TO DRAIN AS SHOWN

**FLOOR PLAN - DRAINAGE SERVICES**  
Scale 1:50@A1

CLIENT REVIEW ISSUE  
NOT FOR CONSTRUCTION



**DESIGN CERTIFICATION**  
This drawing is the referenced copy and issue as noted in the Technical Design Certification as issued in compliance with the Building Act 2102.  
Refer to Design Certificate dated same for reference design standards.  
Subsequent revisions after the date of certification must be referenced by the installing contractor when submitting final certification.

Authorized Engineering Staff For P.J. Wright & Assoc. Date

A	21/10/21	ISSUED FOR DEVELOPMENT APPROVAL
PRE	10/9/21	PRELIMINARY ISSUE
Revision	Date	Description

**P.J. WRIGHT & ASSOCIATES PTY LTD**  
Hydraulic & Fire Design Consultants  
Suite 2 / 101 Scarborough Beach Road Mount Hawthorn Western Australia 6016  
PO Box 335 Mount Hawthorn Western Australia 6915  
Telephone (08) 9443 3466 Facsimile (08) 9242 2304 email contact@pjwrightandassociates.com.au

**AHSCA**  
THE ASSOCIATION OF HYDRAULIC SERVICES CONSULTANTS AUSTRALIA INCORPORATED

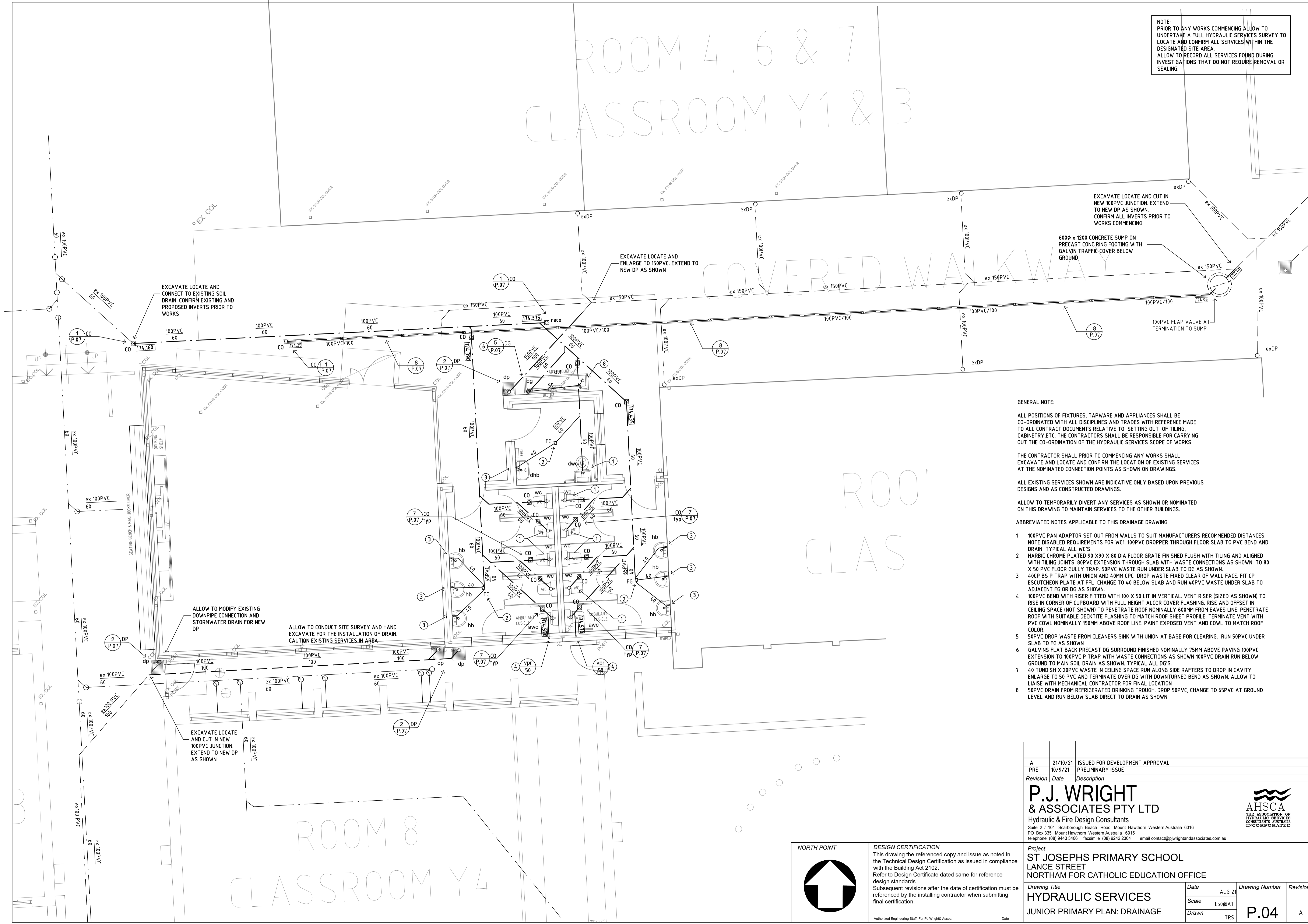
Project  
**ST JOSEPHS PRIMARY SCHOOL**  
LANCE STREET  
NORTHAM FOR CATHOLIC EDUCATION OFFICE

Drawing Title	Date	Drawing Number	Revision
<b>HYDRAULIC SERVICES</b>	AUG 21	P.03	A
SENIOR PRIMARY PLAN: DRAINAGE	Scale 1:50@A1	Drawn TRS	

This drawing is an Autocad format document and manual adjustment of plots or prints is not permitted.

# ROOM 4, 6 & 7 CLASSROOM Y1 & 3

NOTE:  
PRIOR TO ANY WORKS COMMENCING ALLOW TO  
UNDERTAKE A FULL HYDRAULIC SERVICES SURVEY TO  
LOCATE AND CONFIRM ALL SERVICES WITHIN THE  
DESIGNATED SITE AREA.  
ALLOW TO RECORD ALL SERVICES FOUND DURING  
INVESTIGATIONS THAT DO NOT REQUIRE REMOVAL OR  
SEALING.



**GENERAL NOTE:**

ALL POSITIONS OF FIXTURES, TAPWARE AND APPLIANCES SHALL BE CO-ORDINATED WITH ALL DISCIPLINES AND TRADES WITH REFERENCE MADE TO ALL CONTRACT DOCUMENTS RELATIVE TO SETTING OUT OF TILING, CABINETS, ETC. THE CONTRACTORS SHALL BE RESPONSIBLE FOR CARRYING OUT THE CO-ORDINATION OF THE HYDRAULIC SERVICES SCOPE OF WORKS.

THE CONTRACTOR SHALL PRIOR TO COMMENCING ANY WORKS SHALL EXCAVATE AND LOCATE AND CONFIRM THE LOCATION OF EXISTING SERVICES AT THE NOMINATED CONNECTION POINTS AS SHOWN ON DRAWINGS.

ALL EXISTING SERVICES SHOWN ARE INDICATIVE ONLY BASED UPON PREVIOUS DESIGNS AND AS CONSTRUCTED DRAWINGS.

ALLOW TO TEMPORARILY DIVERT ANY SERVICES AS SHOWN OR NOMINATED ON THIS DRAWING TO MAINTAIN SERVICES TO THE OTHER BUILDINGS.

ABBREVIATED NOTES APPLICABLE TO THIS DRAINAGE DRAWING.

- 100PVC PAN ADAPTOR SET OUT FROM WALLS TO SUIT MANUFACTURERS RECOMMENDED DISTANCES. NOTE DISABLED REQUIREMENTS FOR WC1. 100PVC DROPPER THROUGH FLOOR SLAB TO PVC BEND AND DRAIN TYPICAL ALL W.C'S
- HARBIC CHROME PLATED 90 X 90 X 80 DIA FLOOR GRATE FINISHED FLUSH WITH TILING AND ALIGNED WITH TILING JOINTS. 80PVC EXTENSION THROUGH SLAB WITH WASTE CONNECTIONS AS SHOWN TO 80 X 50 PVC FLOOR GULLY TRAP. 50PVC WASTE RUN UNDER SLAB TO DG AS SHOWN.
- 40CP BS P TRAP WITH UNION AND 40MM CPC DROP WASTE FIXED CLEAR OF WALL FACE. FIT CP ESCUTCHEON PLATE AT FFL CHANGE TO 40 BELOW SLAB AND RUN 40PVC WASTE UNDER SLAB TO ADJACENT FG OR DG AS SHOWN.
- 100PVC BEND WITH RISER FITTED WITH 100 X 50 LIT IN VERTICAL. VENT RISER (SIZED AS SHOWN) TO RISE IN CORNER OF CUPBOARD WITH FULL HEIGHT ALCOR COVER FLASHING. RISE AND OFFSET IN CEILING SPACE (NOT SHOWN) TO PENETRATE ROOF NOMINALLY 600MM FROM EAVES LINE. PENETRATE ROOF WITH SUITABLE DECKTITE FLASHING TO MATCH ROOF SHEET PROFILE. TERMINATE VENT WITH PVC COWL NOMINALLY 150MM ABOVE ROOF LINE. PAINT EXPOSED VENT AND COWL TO MATCH ROOF COLOR.
- 50PVC DROP WASTE FROM CLEANERS SINK WITH UNION AT BASE FOR CLEARING. RUN 50PVC UNDER SLAB TO FG AS SHOWN.
- GALVINS FLAT BACK PRECAST DG SURROUND FINISHED NOMINALLY 75MM ABOVE PAVING 100PVC EXTENSION TO 100PVC P TRAP WITH WASTE CONNECTIONS AS SHOWN 100PVC DRAIN RUN BELOW GROUND TO MAIN SOIL DRAIN AS SHOWN. TYPICAL ALL DG'S.
- 40 TUNDISH X 20PVC WASTE IN CEILING SPACE RUN ALONG SIDE RAFTERS TO DROP IN CAVITY ENLARGE TO 50 PVC AND TERMINATE OVER DG WITH DOWNTURNED BEND AS SHOWN. ALLOW TO LIAISE WITH MECHANICAL CONTRACTOR FOR FINAL LOCATION
- 50PVC DRAIN FROM REFRIGERATED DRINKING TROUGH. DROP 50PVC, CHANGE TO 65PVC AT GROUND LEVEL AND RUN BELOW SLAB DIRECT TO DRAIN AS SHOWN

A	21/10/21	ISSUED FOR DEVELOPMENT APPROVAL
PRE	10/9/21	PRELIMINARY ISSUE
Revision	Date	Description

**P.J. WRIGHT & ASSOCIATES PTY LTD**  
Hydraulic & Fire Design Consultants

Suite 2 / 101 Scarborough Beach Road Mount Hawthorn Western Australia 6016  
PO Box 335 Mount Hawthorn Western Australia 6915  
telephone (08) 9443 3466 facsimile (08) 9242 2304 email contact@pjwrightandassociates.com.au

**AHSCA**  
THE ASSOCIATION OF  
HYDRAULIC SERVICES  
CONSULTANTS AUSTRALIA  
INCORPORATED

Project  
**ST JOSEPHS PRIMARY SCHOOL**  
LANCE STREET  
NORTHAM FOR CATHOLIC EDUCATION OFFICE

Drawing Title	Date	Drawing Number	Revision
<b>HYDRAULIC SERVICES</b>	AUG 21	<b>P.04</b>	A
JUNIOR PRIMARY PLAN: DRAINAGE	Scale 1:50@A1	Drawn TRS	

**NORTH POINT**

**DESIGN CERTIFICATION**  
This drawing the referenced copy and issue as noted in the Technical Design Certification as issued in compliance with the Building Act 2102.  
Refer to Design Certificate dated same for reference design standards  
Subsequent revisions after the date of certification must be referenced by the installing contractor when submitting final certification.

Authorized Engineering Staff For P.J. Wright & Assoc. Date

# ROOM 8 CLASSROOM Y4

This drawing is an Autocad format document and manual adjustment of plots or prints is not permitted.



NOTE:  
 PRIOR TO ANY WORKS COMMENCING ALLOW TO  
 UNDERTAKE A FULL HYDRAULIC SERVICES SURVEY TO  
 LOCATE AND CONFIRM ALL SERVICES WITHIN THE  
 DESIGNATED SITE AREA.  
 ALLOW TO RECORD ALL SERVICES FOUND DURING  
 INVESTIGATIONS THAT DO NOT REQUIRE REMOVAL OR  
 SEALING.

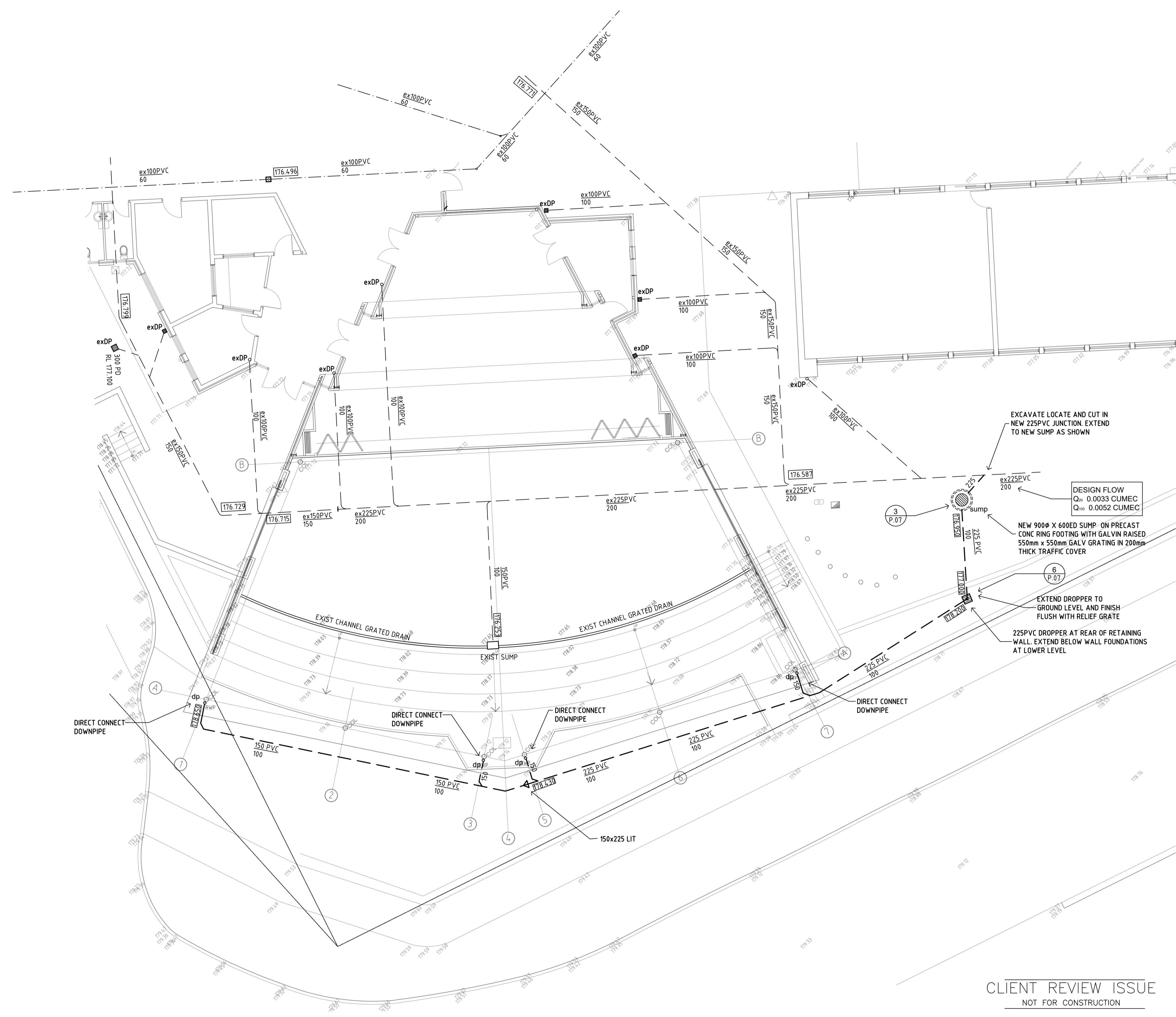
GENERAL NOTE:

ALL POSITIONS OF FIXTURES, TAPWARE AND APPLIANCES SHALL BE  
 CO-ORDINATED WITH ALL DISCIPLINES AND TRADES WITH REFERENCE MADE  
 TO ALL CONTRACT DOCUMENTS RELATIVE TO SETTING OUT OF TILING,  
 CABINETRY, ETC. THE CONTRACTORS SHALL BE RESPONSIBLE FOR CARRYING  
 OUT THE CO-ORDINATION OF THE HYDRAULIC SERVICES SCOPE OF WORKS.

THE CONTRACTOR SHALL PRIOR TO COMMENCING ANY WORKS SHALL  
 EXCAVATE AND LOCATE AND CONFIRM THE LOCATION OF EXISTING SERVICES  
 AT THE NOMINATED CONNECTION POINTS AS SHOWN ON DRAWINGS.

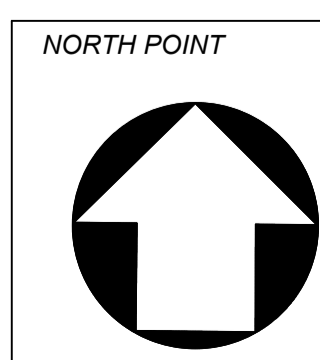
ALL EXISTING SERVICES SHOWN ARE INDICATIVE ONLY BASED UPON PREVIOUS  
 DESIGNS AND AS CONSTRUCTED DRAWINGS.

ALLOW TO TEMPORARILY DIVERT ANY SERVICES AS SHOWN OR NOMINATED  
 ON THIS DRAWING TO MAINTAIN SERVICES TO THE OTHER BUILDINGS.



1 ASSEMBLY - DRAINAGE SERVICES  
 Scale 1:100

CLIENT REVIEW ISSUE  
 NOT FOR CONSTRUCTION



DESIGN CERTIFICATION  
 This drawing the referenced copy and issue as noted in  
 the Technical Design Certification as issued in compliance  
 with the Building Act 2102.  
 Refer to Design Certificate dated same for reference  
 design standards.  
 Subsequent revisions after the date of certification must be  
 referenced by the installing contractor when submitting  
 final certification.  
 Authorized Engineering Staff For P.J. Wright & Assoc. Date

A	21/10/21	ISSUED FOR DEVELOPMENT APPROVAL
PRE	10/9/21	PRELIMINARY ISSUE
Revision	Date	Description

**P.J. WRIGHT & ASSOCIATES PTY LTD**  
 Hydraulic & Fire Design Consultants  
 Suite 2 / 101 Scarborough Beach Road Mount Hawthorn Western Australia 6016  
 PO Box 335 Mount Hawthorn Western Australia 6915  
 telephone (08) 9443 3466 facsimile (08) 9242 2304 email contact@pjwrightandassociates.com.au



Project  
**ST JOSEPHS PRIMARY SCHOOL**  
 1 LANCE STREET  
 NORTHAM FOR CATHOLIC EDUCATION OFFICE

Drawing Title	Date	Drawing Number	Revision
HYDRAULIC SERVICES	AUG 21	P.06	A
COVERED ASSEMBLY: DRAINAGE	Scale 1:100 @ A1	Drawn TRS/JGT	

This drawing is an Autocad format document and manual adjustment of plots or prints is not permitted.