



Facility Profile

Northam Town Hall

Address: Cnr Wellington & Gordon Street,
Northam

Room Capacity: 390 seated
Floor Area: 225m²
Floors: Timber

Potential Uses:

- Weddings
- Concerts
- Birthday Parties
- Exhibitions
- School Productions
- Community Meetings
- Dancing Classes
- Fitness Classes

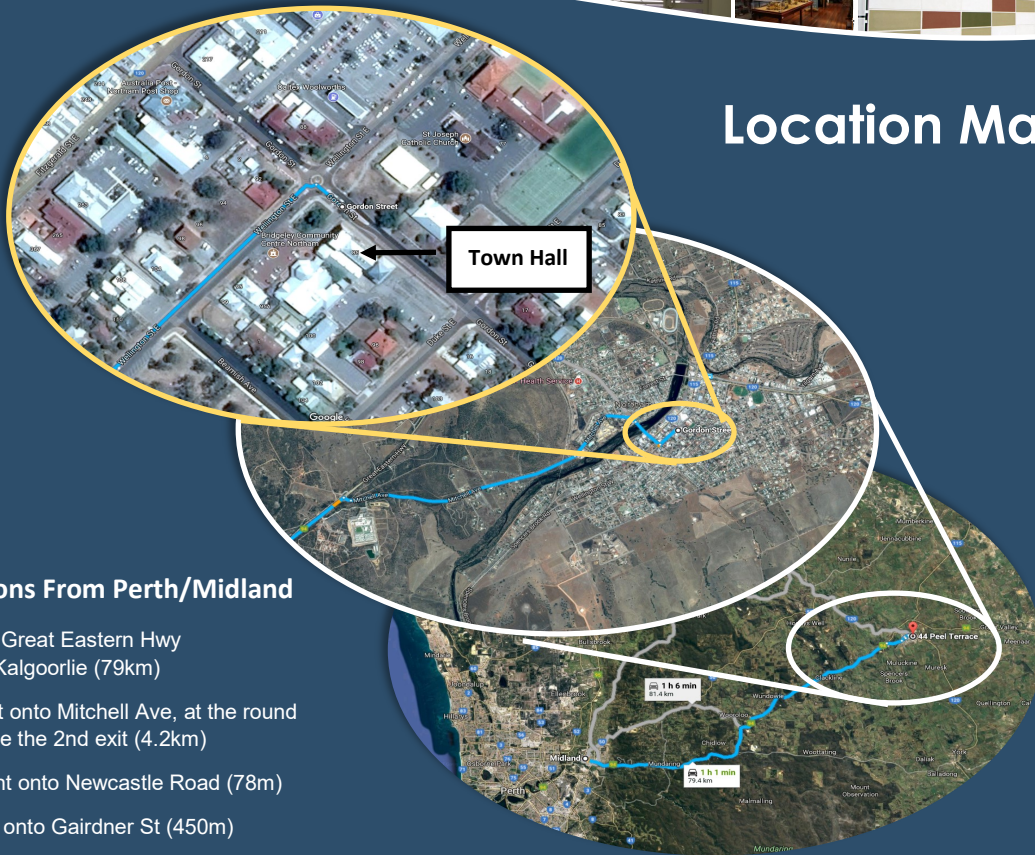
Features:

- Commercial Kitchen
- Stage (With Curtain)
- Box Office
- Change rooms with Showers
- Kiosk / Bar
- Air Conditioned / Heaters
- Balcony Viewing





Location Map



Directions From Perth/Midland

Take the Great Eastern Hwy towards Kalgoorlie (79km)

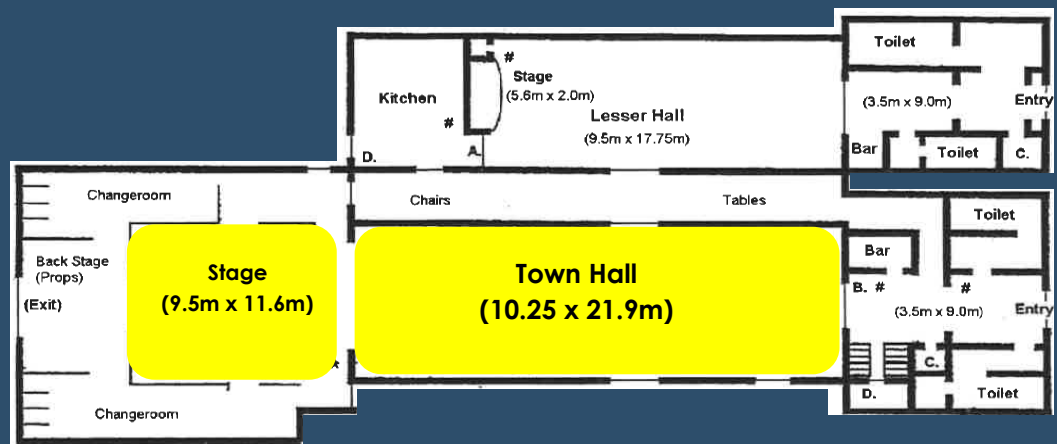
Turn right onto Mitchell Ave, at the round about take the 2nd exit (4.2km)

Turn Right onto Newcastle Road (78m)

Continue onto Gairdner St (450m)

At the Roundabout take the 1st exit onto Wellington St (300m)

Floor Plan



Want to hire this facility?

For bookings please contact the Northam Recreation Centre on 9622 5153 or email bookings@northam.wa.gov.au