

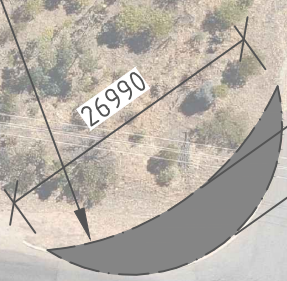
B-Triple (20m turning)
 Overall Length 35.400m
 Overall Width 2.500m
 Overall Body Height 4.300m
 Min Body Ground Clearance 0.540m
 Track Width 2.500m
 Lock-to-lock time 6.00s
 Curb to Curb Turning Radius 20.000m

- LEGEND:
- TWO-COAT SEAL, 1707m²
 - UNSEALED HARDSTAND
 - LANDSCAPING
 - APPLICATION SITE
 - INDICATIVE SWALES/PIPES



5m WIDE LANDSCAPING
 (TWO ROWS OF TREES)

ROAD WIDENING
 BY 5.5m, 113m² AREA
 FOR EXTENSION



NO DIRECT ACCESS FROM NEWCASTLE RD

WASTE WATER DISPOSAL AREA

COLEBATCH ST TO BE
 UPGRADED

DRAINAGE
 BASIN

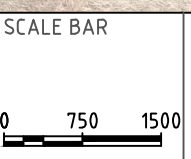
LANDSCAPING TO
 BE PROVIDED TO
 THE SATISFACTION
 OF THE SHIRE

TRAILER PARKING
 15 SPACES

TO BE
 DEMOLISHED

COLEBATCH ST

NEWCASTLE RD

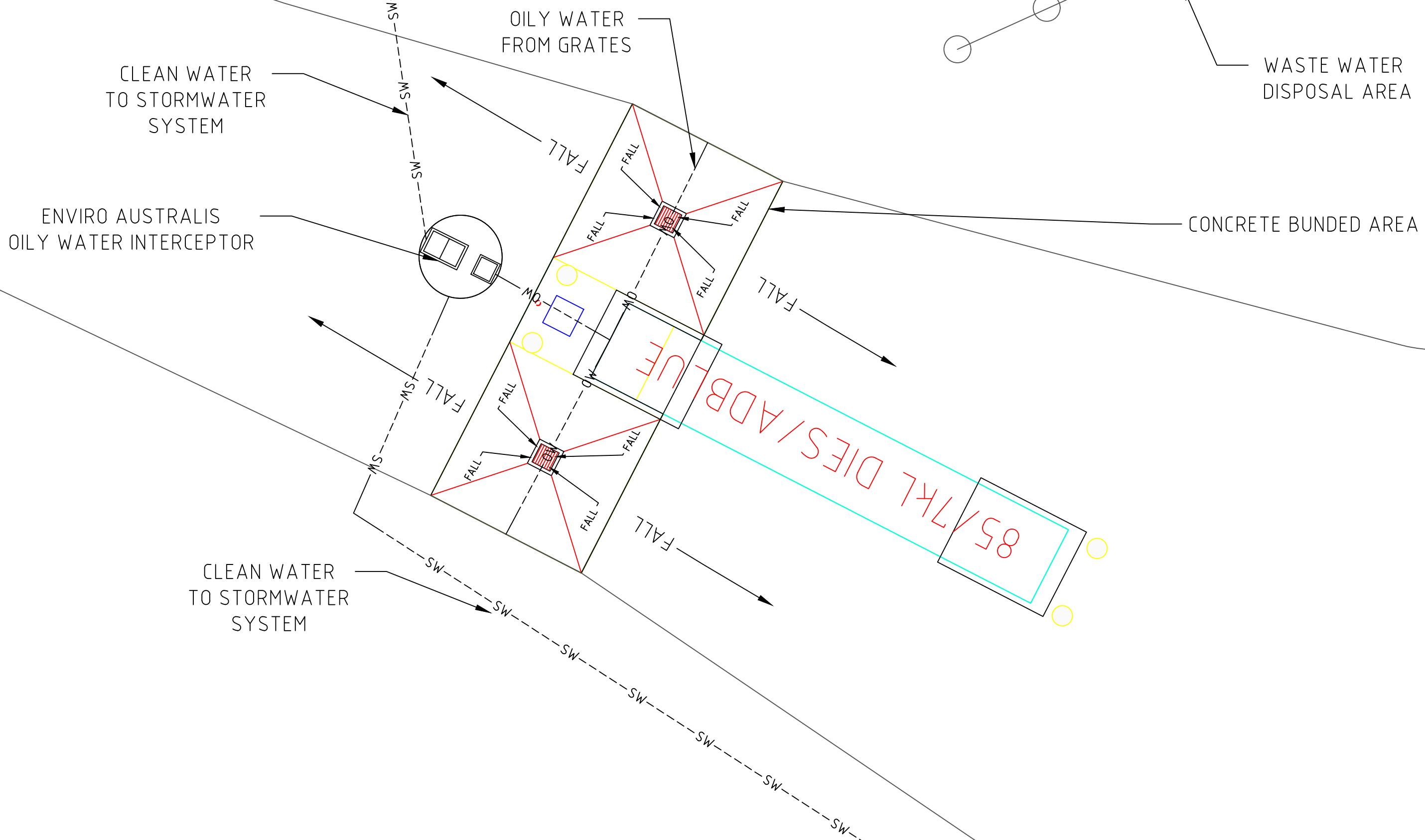


REV	DATE	BY	DESCRIPTION

IOR UNMANNED DIESEL STOP
 NORTHAM, WA, 6401
 176 NEWCASTLE ST

DRAWING TITLE
 SITE LAYOUT

STATUS			
DA ISSUE			
DRAWN	DATE CREATED	DRAWING NO.	REV
	10.09.21		C
A1 SCALE 1:375		A3 SCALE 1:750	SHEET



SCALE BAR	REV	DATE	BY	DESCRIPTION
-----------	-----	------	----	-------------

IOR UNMANNED DIESEL STOP
 NORTHAM, WA, 6401
 176 NEWCASTLE ST

DRAWING TITLE

FUEL DISPENSING LAYOUT

STATUS

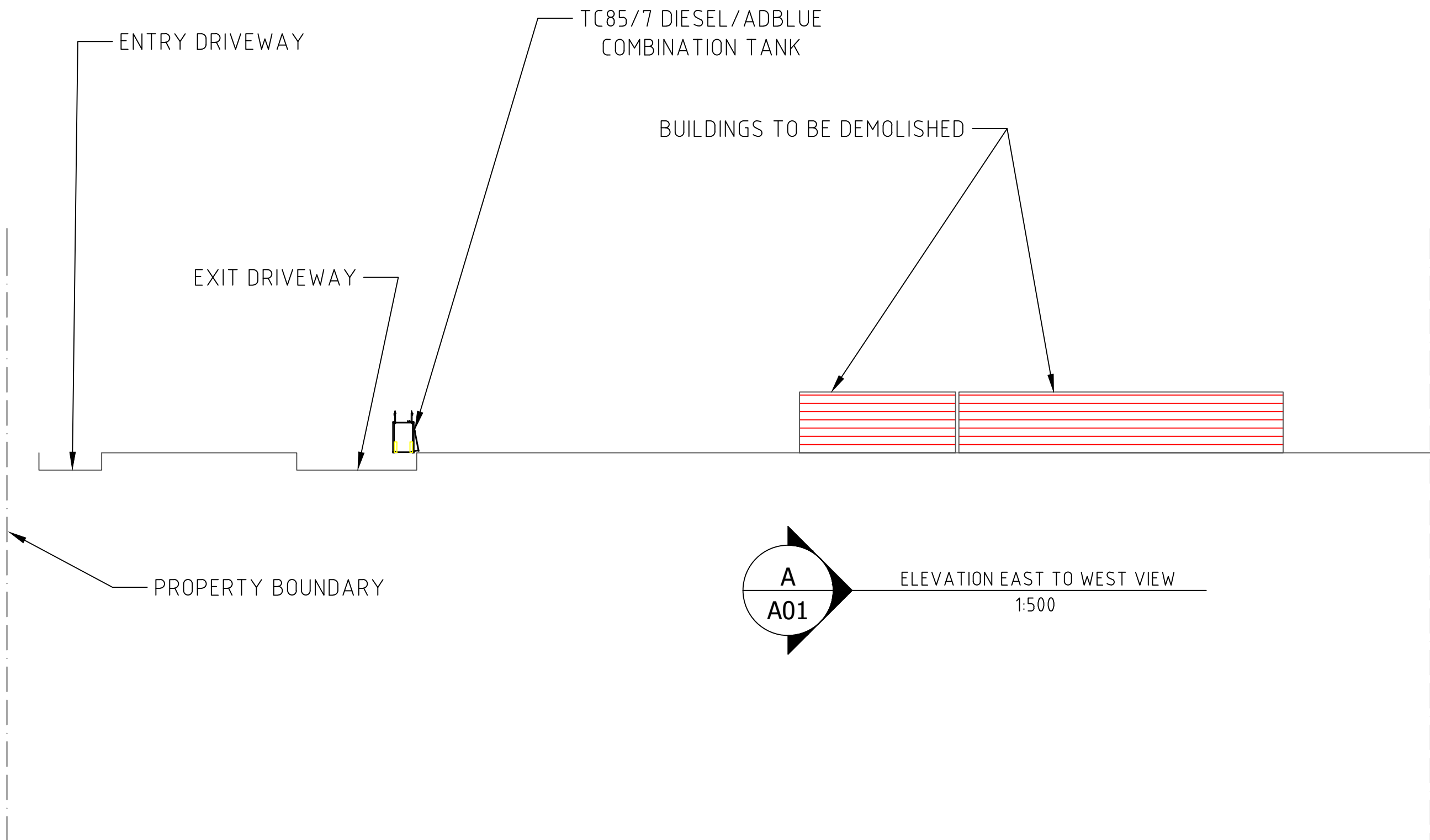
DA ISSUE

DRAWN	DATE CREATED	DRAWING NO.	REV
-------	--------------	-------------	-----

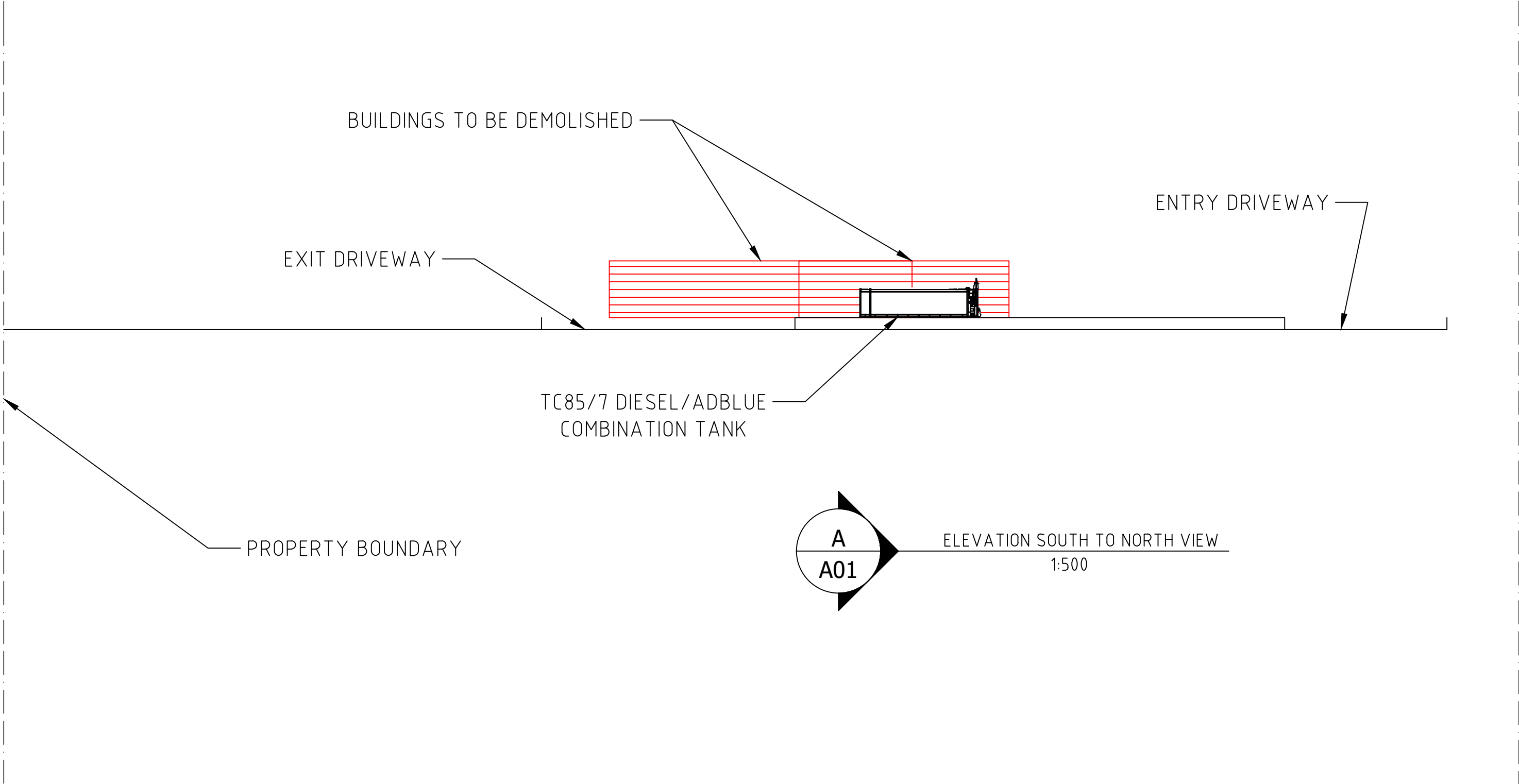
10.09.21

C

A1 SCALE	A3 SCALE	SHEET
----------	----------	-------



SCALE BAR	REV	DATE	BY	DESCRIPTION	DRAWING TITLE	STATUS			
				IOR UNMANNED DIESEL STOP NORTHAM, WA, 6401 176 NEWCASTLE ST	ELEVATION - EAST TO WEST	DA ISSUE			
						DRAWN	DATE CREATED	DRAWING NO.	REV
							10.09.21		C
						A1 SCALE	A3 SCALE	SHEET	



SCALE BAR	REV	DATE	BY	DESCRIPTION	DRAWING TITLE	STATUS			
				IOR UNMANNED DIESEL STOP NORTHAM, WA, 6401 176 NEWCASTLE ST	ELEVATION - SOUTH TO NORTH	DA ISSUE			
						DRAWN	DATE CREATED	DRAWING NO.	REV
							10.09.21		C
						A1 SCALE	A3 SCALE	SHEET	



View indicative only

DRAWING LIST		
SHEET NUMBER	SHEET NAME	CURRENT REVISION
A000	TITLE PAGE	A
A200	PLAN	A
A300	ELEVATIONS	A
A500	SALES SCHEDULES	A

200228G
 THE TRUSTEE FOR IOR PROPERTY TRUST
 MULTIPLE SITES
 QLD
 9.6 x 3.0m CONTROL ROOM/STORE/AMENITIES

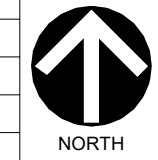
ATCO

ATCO STRUCTURES & LOGISTICS PTY. LTD. PHONE: (07) 3412 8600
 55 TONKA STREET, LUSCOMBE, QLD 4207 FAX: (07) 3412 8699
 P.O. BOX 393, BEENLEIGH, QLD 4207 ABN: 71 083 902 309
 E-mail: ASLAu.Sales@atco.com

ISSUED FOR REVIEW

WIND REGION:	B
TERRAIN CATEGORY:	2
IMPORTANCE LEVEL:	2
SHIELDING FACTOR:	NS
BUILDING CLASS:	6
FLOOR LOADS DISTRIBUTED (kPa):	2.0
CONCENTRATED (kN):	1.8
CLIMATE ZONE:	2

FLOOR LOADS CALCULATED FROM AS1170.1 - 2002. WIND SPEED CALCULATED FROM AS1170.2 - 2011. BUILDING CLASS, IMPORTANCE LEVEL, PROBABILITY OF EXCEEDANCE, WIND REGION, TERRAIN CATEGORY, TOPOGRAPHIC CLASSIFICATION, SHIELDING FACTOR, CLIMATE ZONE & NORTH POINT ARE ASSUMED UNLESS OTHERWISE ADVISED BY CLIENT.



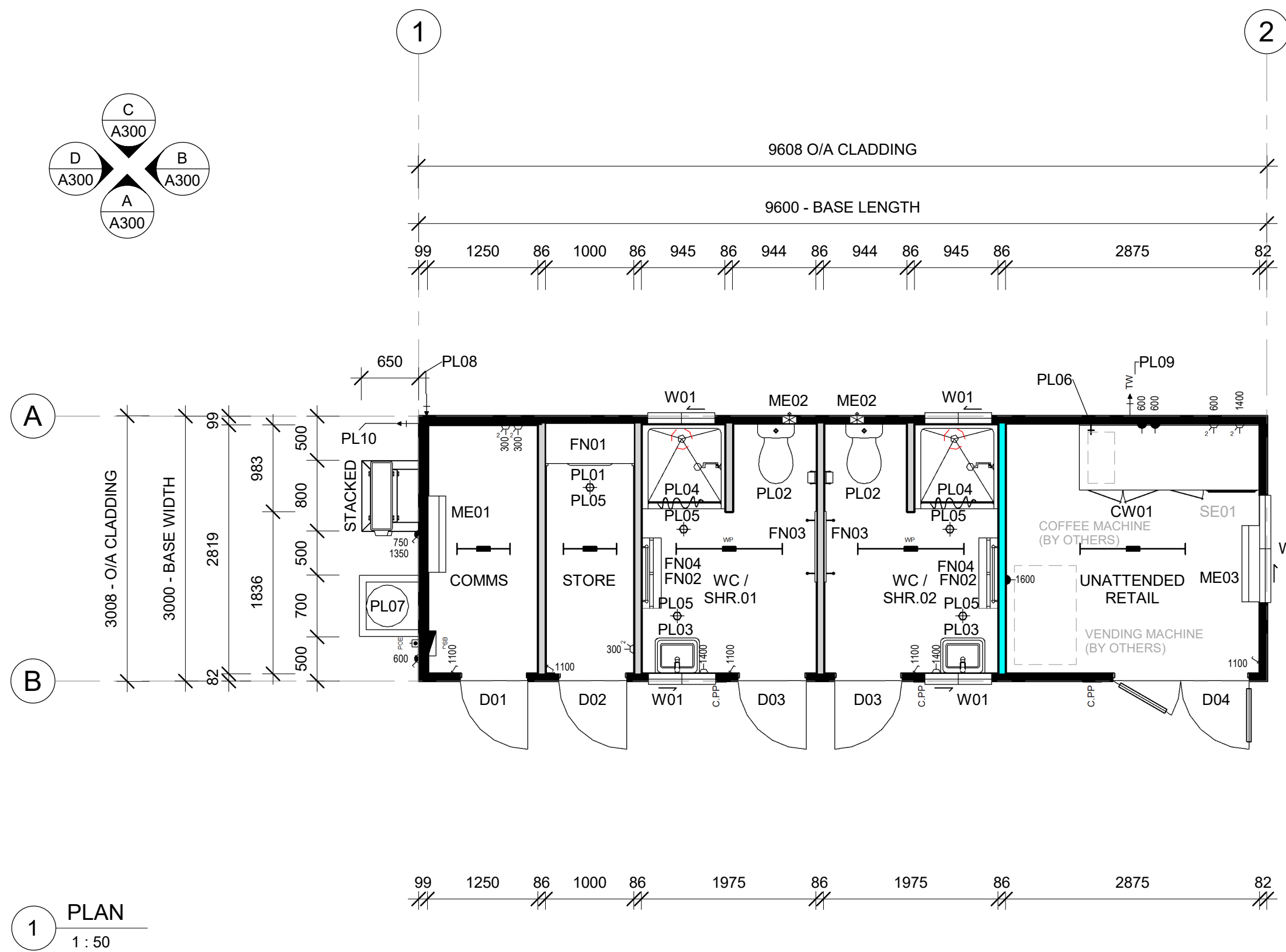
ROOM SCHEDULE	
NAME	AREA
COMMS	3.52 m ²
STORE	2.84 m ²
UNATTENDED RETAIL	8.15 m ²
WC / SHR.01	5.52 m ²
WC / SHR.02	5.52 m ²

FINISHES SCHEDULE	
FLOOR COVERING	2mm VINYL - SLIP RESISTANT - 500mm COVERED
CLADDING - EXTERNAL	COLORBOND MAXIRIB - HORIZONTAL
CLADDING - EXTERNAL	COLORBOND MAXIRIB - HORIZONTAL
CLADDING - EXTERNAL	COLORBOND MAXIRIB - HORIZONTAL
WALL LINING - INTERNAL (UNDER 3.6mm POLYESTER COATED PLYWOOD)	17mm PLYWOOD - COMMS AREA ONLY
WALL LINING - INTERNAL	3.6mm POLYESTER COATED PLYWOOD
CEILING LINING - INTERNAL	3.6mm COATED PLYWOOD
ROOF SHEETING	0.42mm BMT SUPERDEK ROOFING

ITEM LIST		
ITEM	QTY	DESCRIPTION
Casework		
CW01	1	BENCHTOP (32mm) c/w SPLASHBACKS (150H) & CABLE HOLE, LAMINATED / CARCASS (16mm) END PANELS, CUPBOARDS (ADJUSTABLE SHELVES) & 1 POT DRAWER UNDER, MELAMINE - 750D (BENCHTOP) / 650D (CUPBOARDS c/w BACK PANEL PENETRATIONS FOR POWER PROVISION ACCESS) - 2044L - 900H
Furniture		
FN01	1	SHELVING, 2 TIER - 450 DEEP - 1000 LONG - 1800mm HIGH
FN02	2	BENCH SEAT, SLATTED TIMBER - 220mm WIDE - 800mm LONG - 450mm HIGH
FN03	2	COAT HOOKS ON TIMBER RAIL - 800L
FN04	2	TOWEL RAIL, CHROME PLATED - 600mm LONG
Plumbing Fixtures		
PL01	1	SINK, CLEANERS w/ HINGED GRATE (COLD TAP ONLY)
PL02	2	WC SUITE c/w TOILET ROLL HOLDER
PL03	2	HAND BASIN, STAINLESS STEEL (HOT & COLD FLICKMIXER) w/ 300mm SPLASHBACK & MIRROR (STAINLESS STEEL)
PL04	2	SHOWER CUBICLE, FIBREGLASS - 945 x 945
PL05	5	FLOOR WASTE
PL06	1	HOSE COCK, COFFEE MACHINE PROVISION - 400H
PL07	1	HOT WATER SYSTEM, MOUNTED EXTERNALLY - 125Ltr, 1x3.6kW
PL08	1	WATER INLET
PL09	1	WASTE OUTLET, THROUGH WALL FOR COFFEE MACHINE (HEIGHT: 400) (SOFT FIT IN FACTORY / RE-INSTALL ON SITE BY OTHERS)
PL10	1	WASTE MANIFOLD OUTLET
Specialty Equipment		
SE01	1	MICROWAVE - 42 Ltr (BY OTHERS)

SYMBOL LEGEND

	ELECTRICAL SWITCHBOARD
	ELECTRICAL POINT OF ENTRY
	LIGHT SWITCH, SINGLE
	ISOLATION SWITCH
	GPO, SINGLE POLE - 1x10A
	GPO, SINGLE POLE - 2x10A
	GPO, SINGLE POLE - 1x15A
	CONDUIT - PINPAD PROVISION (PINPAD BY OTHERS) (WALL PENETRATION BY ATCO - 235H - 172W - 26D) (200 DOOR FRAME TO PAD CENTRE - BOTTOM OF PAD AT LOCKING MECHANISM HEIGHT)
	LIGHT - 20W LED BATTEN & DIFFUSER
	LIGHT - 40W LED BATTEN & DIFFUSER
	LIGHT - 40W LED BATTEN - IP65
	PLUMBING WATER INLET POINT
	PLUMBING WASTE MANIFOLD OUTLET POINT (SOFT FIT IN FACTORY / RE-INSTALL ON SITE BY OTHERS)
	PLUMBING WASTE MANIFOLD OUTLET POINT



1 PLAN
1 : 50

GENERAL NOTES

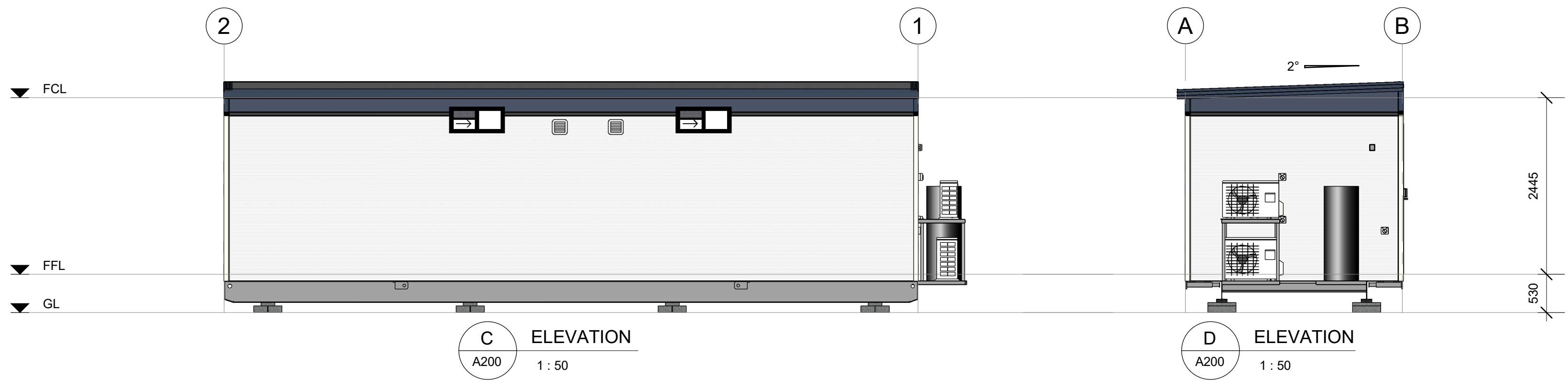
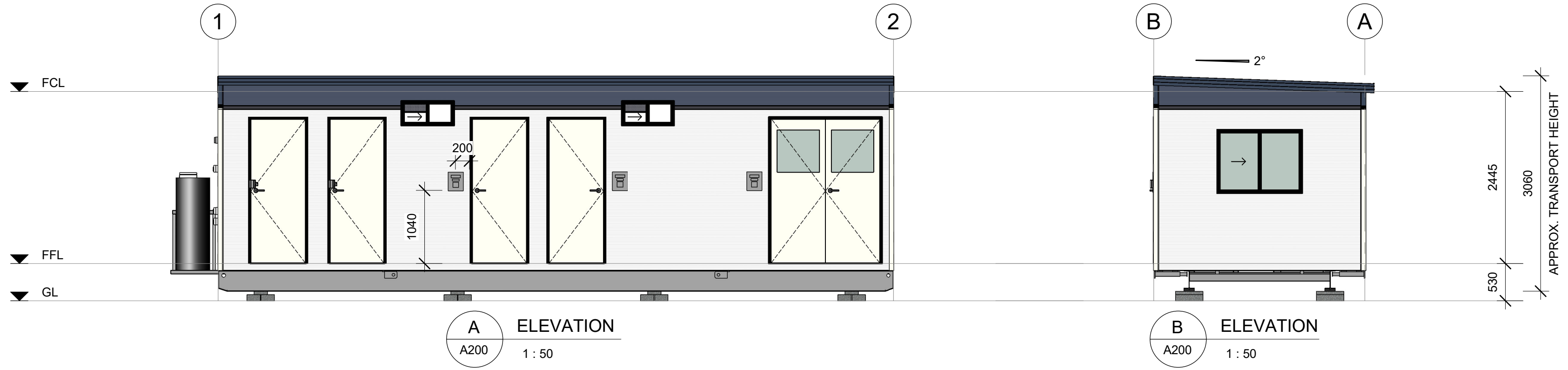
- NO ALLOWANCE OF SECTION J ENERGY EFFICIENCY
- NO ALLOWANCE FOR COMPLIANCE WITH AS1428.1 - 2009 (DESIGN FOR ACCESS & MOBILITY)
- NO ALLOWANCE FOR FIRE SEPARATION FROM EXISTING BUILDINGS / STRUCTURES ON SITE
- NO ALLOWANCE FOR FIRE FIGHTING EQUIPMENT
- LANDINGS & STAIRS/RAILINGS INSTALL ON SITE BY OTHERS

REV	DESCRIPTION	DATE	BY	CHKD
A	ISSUED FOR REVIEW	06.08.20	VT	

CONFIRM DETAILS OF SET OUTS, LEVELS AND CRITICAL DIMENSIONS ON SITE PRIOR TO SHOP DRAWINGS AND FABRICATION. QUALITY CERTIFIED TO AS/NZS ISO 9001:2008 BY SCI-QUAL INTERNATIONAL REGN No. 531. DO NOT SCALE FROM THIS DRAWING. USE FIGURED DIMENSIONS OVERALL DIMENSIONS EXCLUDE EXTERNAL CLADDINGS U.N.O. ALL CONSTRUCTION TO COMPLY WITH NATIONAL CONSTRUCTION CODE OF AUSTRALIA AND APPLICABLE AUSTRALIAN STANDARDS. THIS DRAWING REMAINS THE PROPERTY OF ATCO STRUCTURES & LOGISTICS PTY. LTD. (ATCO). IT MAY NOT BE REPRODUCED OR COPIED WHOLE OR IN PART WITHOUT WRITTEN AUTHORITY.



CLIENT	THE TRUSTEE FOR IOR PROPERTY TRUST	TITLE	PLAN
DESCRIPTION	9.6 x 3.0m CONTROL ROOM/STORE/AMENITIES	PROJECT No.	SCALE AT A2
ADDRESS	MULTIPLE SITES QLD	DRAWING NUMBER	1 : 50
		200228G -A200	REVISION
			A



CONFIRM DETAILS OF SET OUTS, LEVELS AND CRITICAL DIMENSIONS ON SITE PRIOR TO SHOP DRAWINGS AND FABRICATION. QUALITY CERTIFIED TO AS/NZS ISO 9001:2008 BY SCI-QUAL INTERNATIONAL REGN No. 531
 DO NOT SCALE FROM THIS DRAWING. USE FIGURED DIMENSIONS. OVERALL DIMENSIONS EXCLUDE EXTERNAL CLADDINGS U.N.O.
 ALL CONSTRUCTION TO COMPLY WITH NATIONAL CONSTRUCTION CODE OF AUSTRALIA AND APPLICABLE AUSTRALIAN STANDARDS
 THIS DRAWING REMAINS THE PROPERTY OF ATCO STRUCTURES & LOGISTICS PTY. LTD. (ATCO). IT MAY NOT BE REPRODUCED OR COPIED WHOLE OR IN PART WITHOUT WRITTEN AUTHORITY

REV	DESCRIPTION	DATE	BY	CHKD
A	ISSUED FOR REVIEW	06.08.20	VT	

ATCO
 ATCO STRUCTURES & LOGISTICS PTY. LTD. PHONE: (07) 3412 8600
 55 TONKA STREET, LUSCOMBE, QLD 4207 FAX: (07) 3412 8699
 P.O. BOX 393, BEENLEIGH, QLD 4207 ABN: 71 083 902 309
 E-mail: ASL@atco.com

CLIENT
 THE TRUSTEE FOR IOR PROPERTY TRUST
 DESCRIPTION
 9.6 x 3.0m CONTROL ROOM/STORE/AMENITIES
 ADDRESS
 MULTIPLE SITES
 QLD

TITLE ELEVATIONS	
PROJECT No.	SCALE AT A2 1 : 50
DRAWING NUMBER 200228G -A300	REVISION A