

Our Ref: 20180115NLA
 1 March 2018

Shire of Northam
 PO Box 613
 NORTHAM WA 6401

Attention: Chadd Hunt
Via email: records@northam.wa.gov.au

Dear Chadd,

RE: EXTRACTIVE INDUSTRY – 446 SPENCERS BROOK ROAD MULUCKINE WA 6401

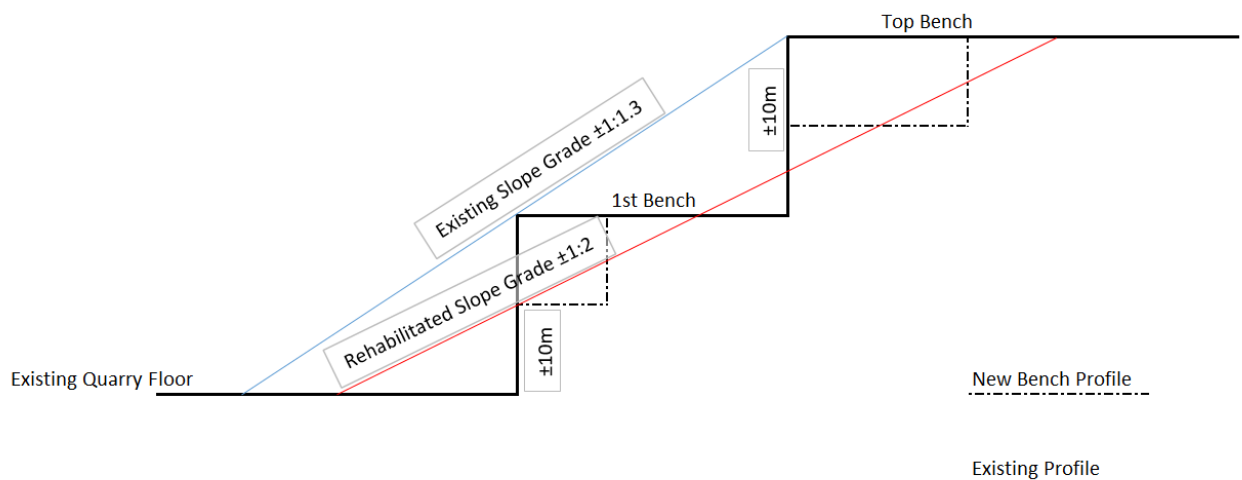
With reference to your two letters dated 2 and 6 February respectively, we comment as below:

Planning

The following details are confirmed:

1. No further extraction will take place except for benching the two existing benches for stability and a reduced gradient as per the sketch below.

REHABILITATED BENCH SECTION



2. The only blasting that will occur will be to make the existing benches safe and reduce the bench levels/heights to accommodate the reduced slope.
 All blasting will be monitored to comply with environmental guidelines as set out in AS 2187.2—2006.

3. i. Annual volumes are approximate averages. The volumes exported are dependent on the market and it may be that we have an export of 200,000T one year and 30,000T another year.
ii. Export campaigns are based on market requirements and will once again dictate the duration of the campaigns.
4. The Acoustic Modelling Report includes all operational noise and maximum frequencies/volumes are based on a sum of the combined activities.

Further Detail

1. Drilling
 - i. Drilling will only occur on the 1st and top benches as and where required to ensure stability as indicated in the sketch above.
 - ii. Refer to the Drill Map enclosed for further detail.
2. Site Plan
Refer to Enclosed Site Plan
3. Vibration control and monitoring will be executed in collaboration with the following guidelines:
 - ISO 2631-2, 1989 "Evaluation of Human Exposure to Whole Body Vibration".
 - Australian Standard 2187, 1983 "Explosives Code – Use of Explosives".
 - Tilley A.R.M.I.T. Geol. Dipeng. Geol. Monash,. "Measurement and Control of Ground Vibration Caused by Road Construction Equipment".

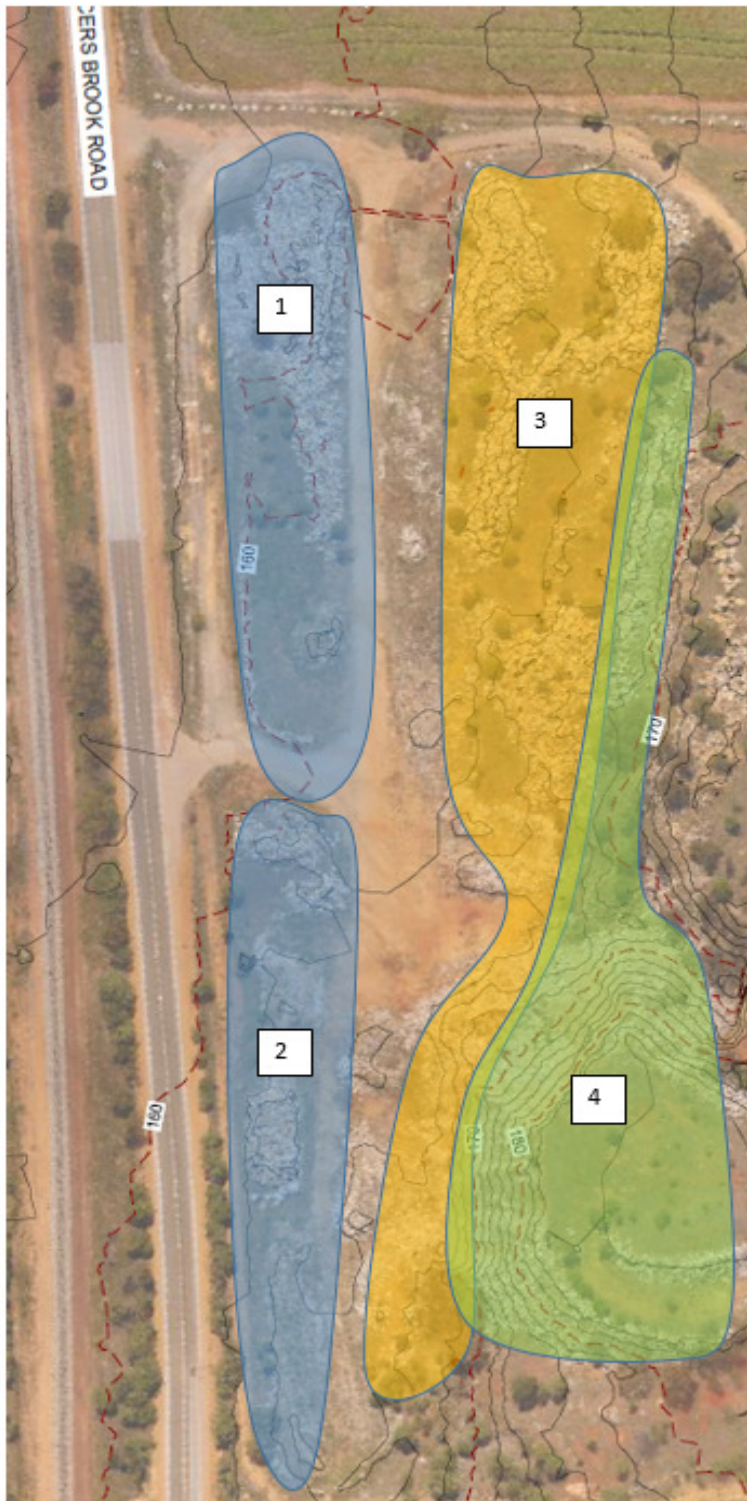
Noise Pollution:

- Environment Protection (Noise) Regulations 1997
 - Occupational Safety & Health Act 1984
 - Australian Standard 2436, "Guide to Noise Control on Construction, Maintenance and Demolition Sites", 1981.
4. Weed and Disease Management

Weed will be managed by controlled spraying as directed by Section 30 of the Biosecurity and Agriculture Management Act 2007.

5. Dust Management
The control of windborne dust will be by spraying road surfaces and stockpile with a water cart as required. Water from site will be utilised for the control of dust. Dust will be monitored and bulk earthworks will be limited to winter months to reduce the impact of dust.
6. Pit rehabilitation will be in line with the sketch indicating the approximate profile of the benches. The aim of pit rehabilitation is to make the pit safe to be used as pasture and to blend outcrops or stockpiles/structures into the surroundings to form an undulated landscape.
Refer to sketch below for staging of rehabilitation.

Rahabilitation Phases



1. Remove Stockpiles in areas 1 and 2 first.
2. Level the area at the front boundary of the property ready for planting.
3. Planting of saplings for screening of the property.
4. Remove usable material from area 3.
5. Push out material in area 4 into area 3 to create an undulated evenly sloped landscape.

The first phase of rehabilitation will be to clear/remove the stockpiles at the front or road side of the property. This boundary will then be planted with saplings to form a visual barrier to the property and ongoing activities.

The second stage will be the removal of the usable material in other areas in the front of the property, whilst phase 3 would be to push out the previous old stockpiles to create a undated surface over the front 150m of the property.

Engineering

1. Transport volumes
 - i. The load transported could range from 18T per semi to 50T per double
 - ii. Density of material is 2.6T/cubic meter
2. Transport Route
See map enclosed
3. Vehicle Movements
 - i. Size of trailers – refer to “Haul Route and restrictions on Network 3 Combination” enclosed.
 - ii. The trucks are standard road trucks with no noise mitigation devices installed.
 - iii. There could be as little as 3 truck at peak hours and up to 12 during non-peak times.

I trust this satisfies the requirements as per your letters. Should you require further information please contact me directly.



Yours sincerely
Tinus Nagel
General Manager
Italia Stone Group

Encl. Haul Route and restrictions on Network 3 Combination
Drilling Plan
Transport Route

