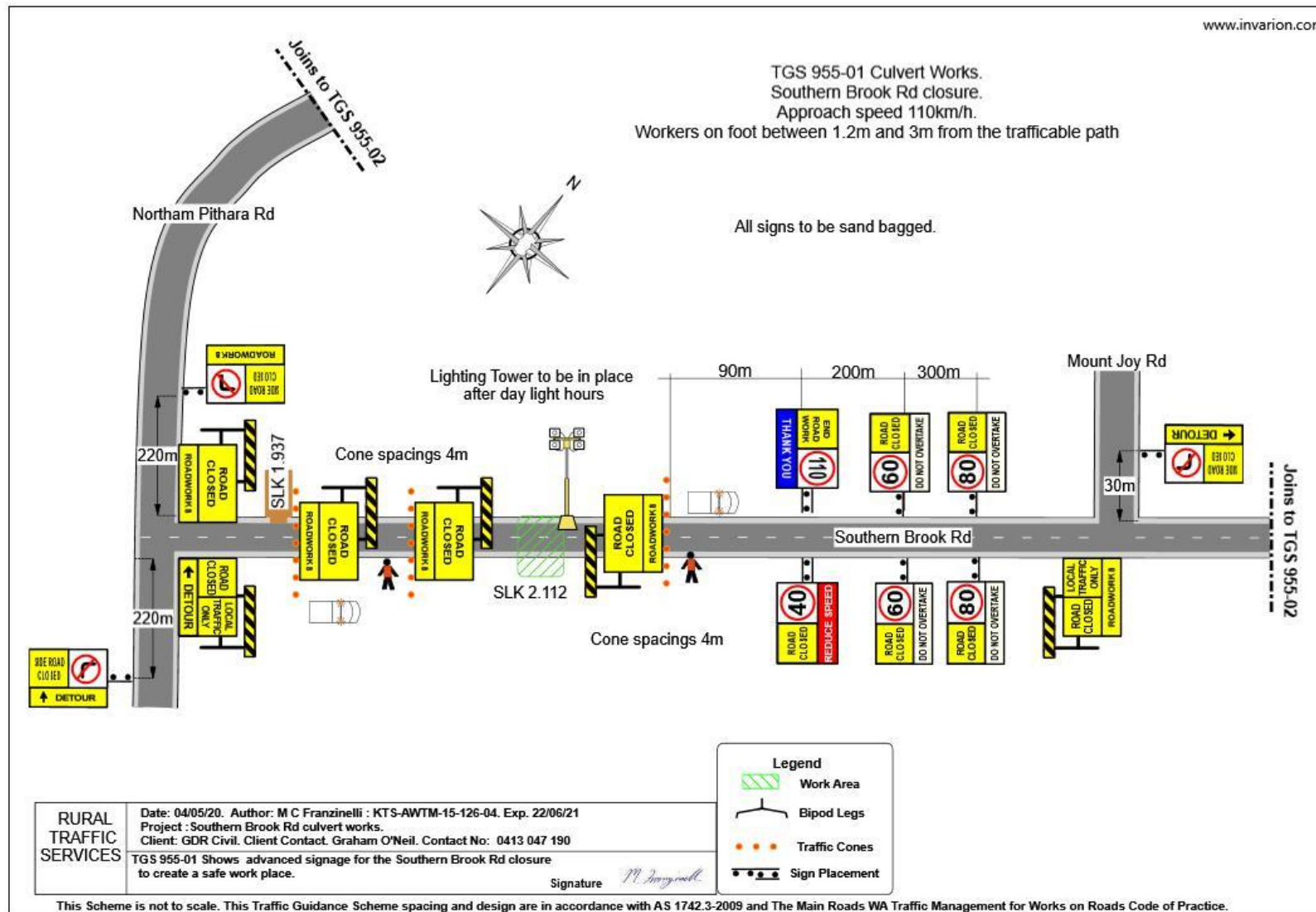


TGS 955-01 Culvert Works.
Southern Brook Rd closure.
Approach speed 110km/h.
Workers on foot between 1.2m and 3m from the trafficable path

All signs to be sand bagged.



TGS 955-02 Culvert Works.
 Southern Brook Rd closure.
 Approach speed 110km/h.
 Workers on foot between 1.2m and 3m from the trafficable path

