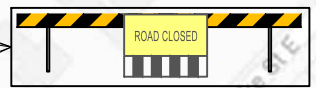
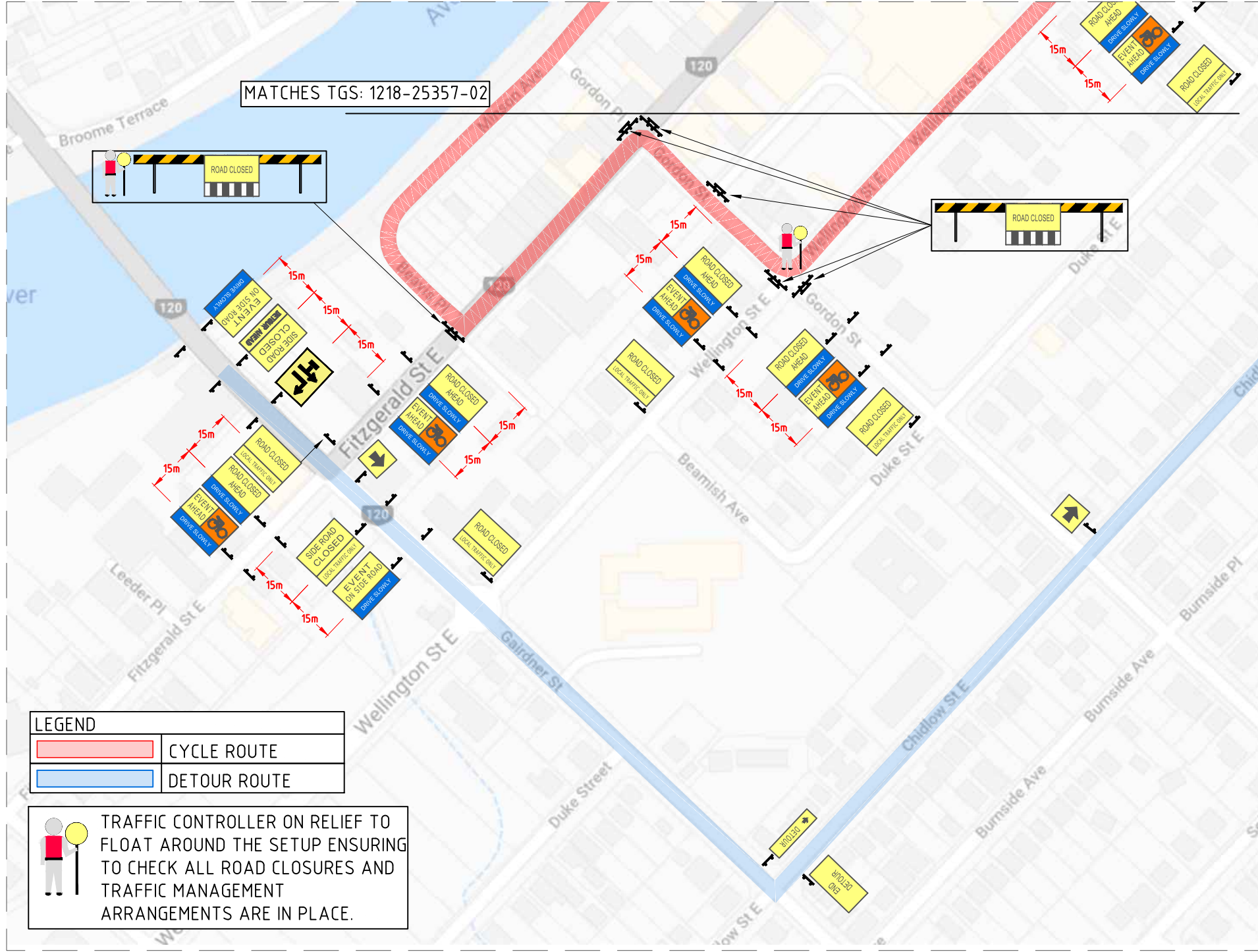


MATCHES TGS: 1218-25357-02



LEGEND	
	CYCLE ROUTE
	DETOUR ROUTE

TRAFFIC CONTROLLER ON RELIEF TO FLOAT AROUND THE SETUP ENSURING TO CHECK ALL ROAD CLOSURES AND TRAFFIC MANAGEMENT ARRANGEMENTS ARE IN PLACE.

REVISIONS			
No.	DATE	DESCRIPTION	AUTH.
1			
2			
3			
4			
5			

AMENDMENTS ALSO TO BE NOTED IN DAILY DIARY

NOTES

ASSOCIATED DRAWINGS	
DESCRIPTION	DRG. No.

RTM

DISCLAIMER:
This traffic management plan is intended for use only with works conducted by Quality Traffic Management and/or the contractor 'at stake'. Quality Traffic Management Pty Ltd is not responsible for misuse or changes which are not authorised by a qualified employee of Quality Traffic Management Pty Ltd.

In the absence of the approved signature, this drawing shall be treated as preliminary.

Quality Traffic Management Pty Ltd
 36 BROOKLAND STREET, BECKENHAM WESTERN AUSTRALIA 6107
 EC005971 ABN 27 082 815 923
 PH: (08) 9352 7600 WEB: www.qtm.net.au
 POSTAL ADDRESS: PO BOX 97 MADDINGTON 6109



NAMES (PRINTED IN FULL)	ACCREDITATION	DATE	SIGNATURES
DESIGNED Michael Downs	KTS AWTM 17 46566 01	19/12/2018	
REVIEWED Simon Goodwin	KTS AWTM 16 44637 03	20/12/2018	

SCALE	LOCATION	LOCAL AUTHORITY
NOT TO SCALE	Minson Avenue, Northham	Shire of Northam

Quality Traffic Management Pty Ltd		
ENGINEERING		
DRAWING #	REV. #	QTM JOB #
1218-25357-01	00	25357

TRAFFIC MANAGEMENT PLAN PREPARED FOR:			
DESC.	CLIENT	AGENT	CONTACT #
Ring Criterium Series - Round 3	West Cycle	Angelina Fong Lim	08 6336 9688